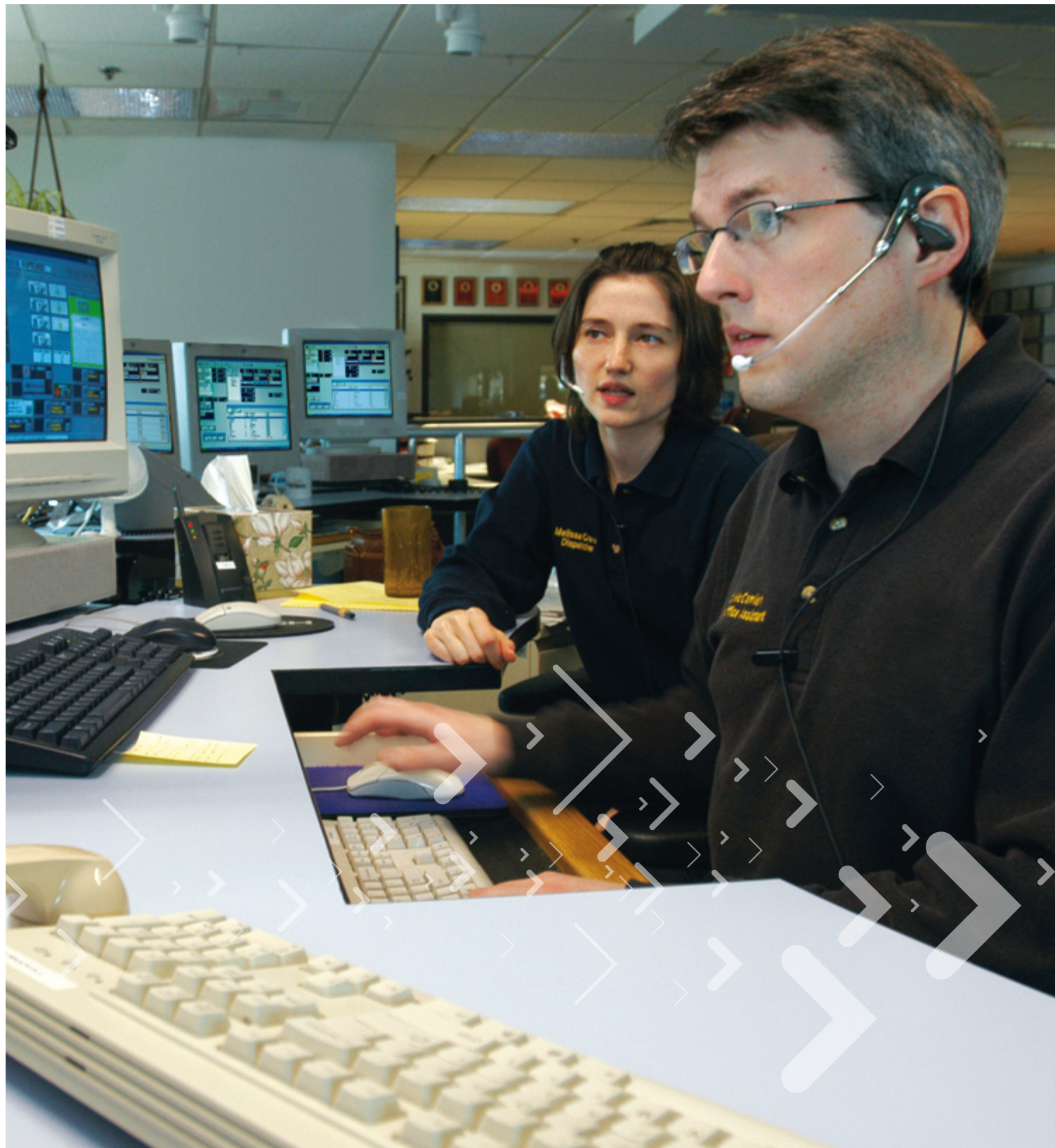




# ***MCC 7500 IP Dispatch Console***

For DIMETRA IP and DIMETRA IP COMPACT



***Motorola's MCC 7500 IP Dispatch Console is specifically designed for Mission Critical and Business Critical communications. It meets your demand for a highly available and reliable radio dispatch network thereby ensuring that you will be able to protect, prevent and respond.***

**The MCC 7500 IP Dispatch Console is an integrated component in Motorola's Dimetra IP and Dimetra IP Compact solutions.**

Motorola IP systems are optimised to perform to robust customer specifications for Mission Critical and Business Critical voice and data communications.

- Emergency calls are prioritised to get through no matter how busy the network.
- Voice quality and intelligibility is optimised to eliminate clipped or degraded audio.
- High audio quality is maintained despite increasing traffic loads.
- Calls are set up in a fraction of a second, regardless of the size of the system.
- Call traffic is quickly re-routed in the event of an IP network path failure, minimising lost audio and any impact on the end user.
- Dispatch performance is enhanced and bandwidth used most efficiently by using IP multicast technology.



**The Motorola MCC 7500 Dispatch Console is fully IP.**

MCC 7500 IP Dispatch Consoles connect directly to the IP network removing the need for interface boxes, digital voice gateways, or backroom electronics. All console activity including trunked and conventional audio and configuration and fault management is supported by the IP network. Conventional channels link to the IP network and use the same audio transport as trunked audio.





Seamlessly integrated into Dimetra IP and Dimetra IP Compact systems, the MCC 7500 IP Dispatch Console provides organisations with important interoperability, cost savings, and security advantages for today's critical communication needs.



With **Agency Partitioning**, departments or agencies can share a system for cost savings and interoperability, yet manage and maintain control over their own resources, such as talkgroups, encryption keys, and configuration data.

#### **Centralised Configuration and Fault Management**

of dispatch positions from the Network Manager, with changes automatically distributed throughout the system, provides vital efficiency. Access to the network manager from multiple remote locations via standard IP methods means users can still have convenient access while enjoying the benefits of centralised management.

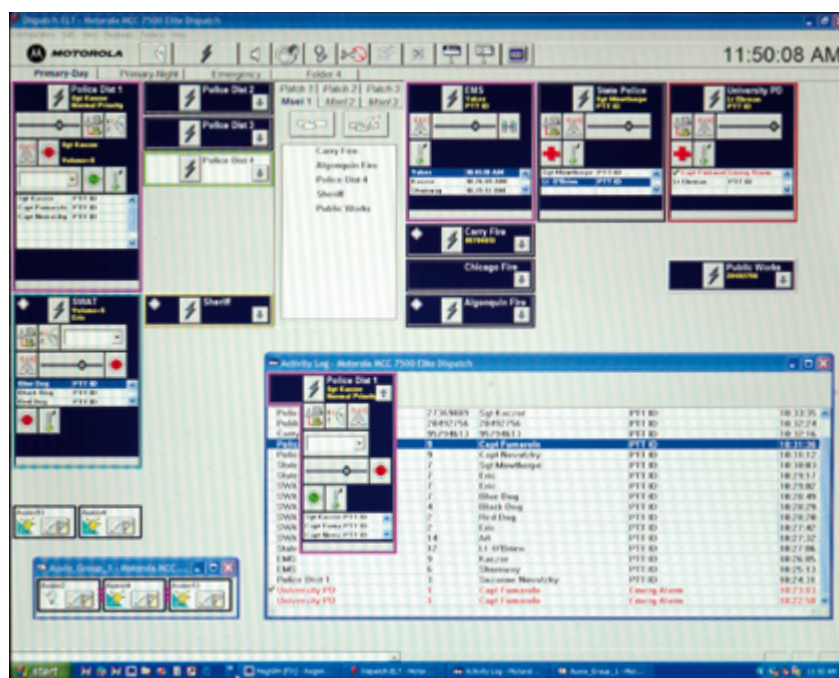
Full **Interoperability** with CENTRACOM. The MCC 7500 console can be combined with CENTRACOM Elite in the same dispatch centre, with robust feature interaction.

With the MCC 7500 IP Dispatch Console, an **integrated IP based logging** approach is introduced that is suitable for Motorola's Mission Critical IP console offering.

- Digital recorded audio that is played back at the same high quality as heard through the dispatch positions.
- Logging recorders that are integrated into the radio system, reaping the benefits of agency partitioning, centralised management, and network security measures.

The MCC 7500 IP Dispatch Console is designed to help reduce your total cost of owning a robust, reliable dispatch solution, without compromising on the high quality you expect from Motorola.

- Compatible with existing Dimetra IP and Dimetra IP Compact Systems with forward migration to protect and leverage your investment.
- Re-use of the Elite Graphical User Interface (GUI) helps minimise dispatcher training.
- Works together with CENTRACOM Elite providing robust feature interaction.
- Installation is simplified and site costs are reduced since the console operator position functions without backroom electronics.
- Console configuration is performed at a centralised Network Manager client, with changes distributed automatically, saving valuable technician and administrator time.
- Integration into the system's central fault management system, which uses industry standard event monitoring protocols, means fewer site visits.
- Flexible bandwidth requirements minimise operating costs for all remote console locations.
- Conventional audio is transported by the same IP network, eliminating the need for channel banks or a separate circuit switch network.



## Customer Accepted Interface

Efficient, easy to use, intuitive and customisable, it features the Elite Graphical User Interface (GUI) that has been refined and proven through years of use in mission critical dispatch operations. This eases migration and minimises user training requirements.

For more information please contact your local Motorola Authorised Dealer or Distributor



MOTOROLA and the Stylised M Logo are registered in the US Patent & Trademark Office. All other product or service names are the property of their respective owners. © Motorola, Inc. 2007. All rights reserved.

MCC7500/BRO-ENG(03/07)

[www.motorola.com/tetra](http://www.motorola.com/tetra)

Motorola, Ltd. Jays Close, Viabes Industrial Estate,  
Basingstoke, Hampshire, RG22 4PD, UK